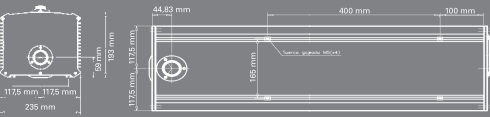
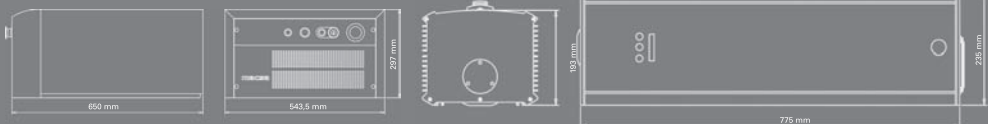


SERIE K-1000 SHS PLUS CO₂ - AIR COOLED

K-1030 SHS PLUS



K-1060 SHS PLUS



LASER MARKING & CODING SYSTEM

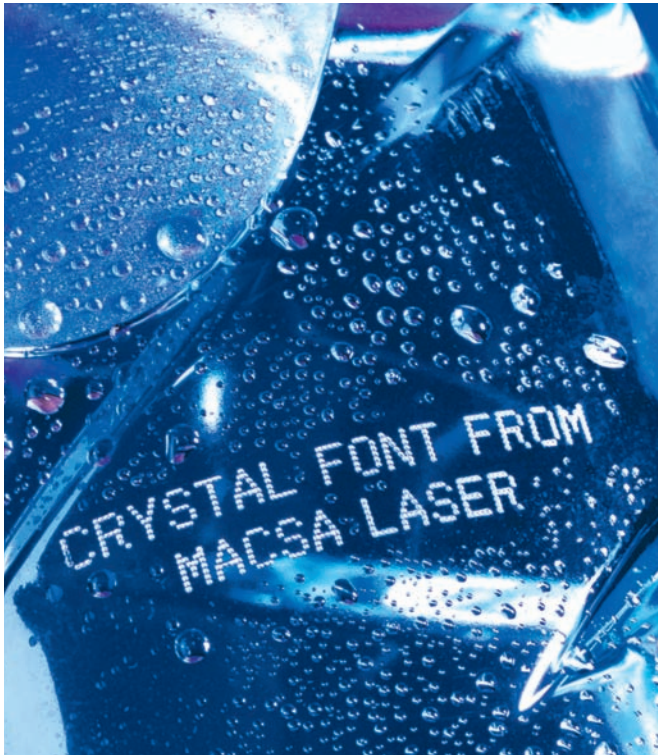
macsa

K-1000 SHS PLUS
LASER SYSTEM

MODEL	K-1030 SHS PLUS			K-1060 SHS PLUS			
WAVELENGHT	10,6μ						
NOMINAL POWER	30W			60W			
MAINS SUPPLY	125V / 230 V 50 / 60 Hz (1 Phase + N) 600 VA			125V / 230 V AC 50 / 60 Hz (1 Phase + N) 1600 VA			
WEIGHT	Net Weight: 28 kg Gross Weight: 36 Kg			Net Weight: 71 kg Gross Weight: 86 Kg			
SYSTEM CABINET	Laser, Control Electronics, computer and Scanners built into the laser system. Power electronics in a separate cabinet.						
FOCAL SPECIFICATIONS	WORKING DISTANCE	FOCAL DISTANCE	MARKING AREA	BEAM DIAMETER			
	85 mm	95 mm	60x60 mm	<160 μm -0			
	115 mm	125 mm	75x75 mm	<220 μm -0			
	190 mm	200 mm	100x100 mm	<350 μm -E			
	230 mm	240 mm	150x150 mm	<420 μm -0			
	310 mm	320 mm	200x200 mm	<560 μm -0			
	400 mm	410 mm	250x250 mm	<720 μm -0			
	μm = micras / S: Standard / O: Optional / Built in 90° marking as standard (easily convertible in 0° marking).						
SOFTWARE	<ul style="list-style-type: none">• ScanLINUX from V.2.8 and higher• Marca Software from V.5.1 and higher• Internal Bar Code• Marca Lite Software• 21 CFR Part 11 Software						
USER INTERFACE	<ul style="list-style-type: none">• Hand Held Terminal / Touch Screen / PC						
CONTROL BY	<ul style="list-style-type: none">• Hand Held Terminal with ScanLinux software• Touch Screen with ScanLinux software• Full Graphics Interface: includes Marca™ software, protection key and Ethernet cable (TCP/IP)• Marca Lite: includes Marca Lite™ software, protection key and Ethernet cable (TCP/IP)						
SPEED	PET BOTTLE	MAX LINE SPEED (m/min)		BOTTLES PER HOUR		SCANNERS SPEED PARAMETERS	
	1 Line / 8 Char.	425	265	182000	113500	10000	75
	2 Line / 8 Char.	215	130	92100	55700	10000	75
	3 Line / 8 Char.	145	85	60000	36400	10000	75
	4 Line / 8 Char.	105	65	45000	27800	10000	75
	DATALASE	MAX LINE SPEED (m/min)		BOTTLES PER HOUR		SCANNERS SPEED PARAMETERS	
	1 Line / 8 Char.	705	325	302100	139200	40000	30
	2 Line / 8 Char.	365	160	156400	68500	40000	30
	3 Line / 8 Char.	245	105	105000	45000	40000	30
	4 Line / 8 Char.	180	75	77100	32100	40000	30
	PAPER LABEL	MAX LINE SPEED (m/min)		BOTTLES PER HOUR		SCANNERS SPEED PARAMETERS	
	1 Line / 8 Char.	575	290	245000	124000	20000	65
	2 Line / 8 Char.	310	140	130000	60000	20000	65
	3 Line / 8 Char.	190	95	80000	40700	20000	65
	4 Line / 8 Char.	145	70	60000	30000	20000	65
MARKING HEAD	CO ₂ sealed laser tube / R.F. technology / Wavelength: 10,6 microns						
ACCESORIES	Diode marking area indicator / Encoder kit / Mounting support / Photocell kit						
AMBIENT CONDITIONS	10°C [50°F] to 40°C [104°F] external temperature / Humidity <95% non-condensing / No vibrations						



THE MACSA K-1000 SHS PLUS RANGE IS THE SOLUTION FOR MARKING YOUR PRODUCTS AT SUPER HIGH SPEED WITH INCREDIBLY CLEAR MESSAGES AT MINIMAL OPERATIONAL COSTS.

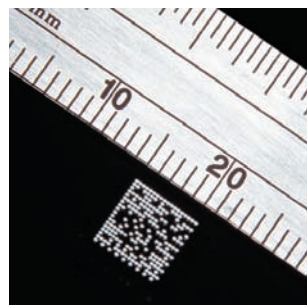
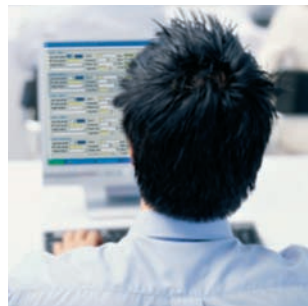


MACSA ID, SA

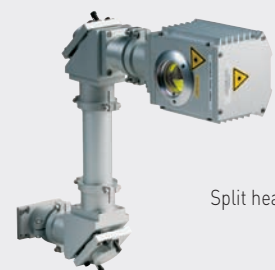
Girona, 46-48 · 08242 Manresa (Barcelona)
SPAIN · PO BOX 383
Tel: + 34 93 873 87 98 · Fax: + 34 93 874 11 56
macsa@macsa.es www.macsalaser.com



FROM EVOLUTION TO INNOVATION



**THE MACSA K-1000 SHS PLUS RANGE
IS THE SOLUTION FOR MARKING YOUR
PRODUCTS AT SUPER HIGH SPEED
WITH INCREDIBLY CLEAR MESSAGES
AT MINIMAL OPERATIONAL COSTS.**



Split head option for difficult access.

THE INCREDIBLY COMPACT DESIGN along with an adjustable marking head ensures that you can install this system on even the most complicated production lines. The system can even be integrated with other manufacturer's equipment.

THIS EASY TO USE SYSTEM works through a combination of extremely fast mirror tracking systems and the most modern software and hardware you can be assured of reliable high speed marking.

THE LATEST IN LASER TECHNOLOGY along with the fact that you don't need expensive replacements results in a system that requires little maintenance, minimal operational costs and no headaches.

THE MARKING PROCESS is unimpeded because you don't need an expensive and space consuming PC on the production line. Furthermore in Macsa lasers, with MACSA's software, you can link several K-1000 laser systems together for even greater control and increased production or to increase the graphic features of the K-1000 laser connecting a PC through the full graphic interface kit.

ALL OF THESE FEATURES ensures that everyone of your products is marked with the same high degree of quality and permanence guaranteeing accurate identification for the lifetime of your products.

A DIVERSE RANGE OF MATERIALS can be marked utilizing the K-1000 system including labels, cardboard, PET, glass, coating and wood.



USER INTERFACE FOR LASER SYSTEMS

HAND-HELD TERMINAL

Connection via RS-232 with ScanLINUX software included in laser marking system • creation and editing of text messages • able to create up to 4 lines of text • 4 types of MFF fonts • modify size (max. 20 mm) and separation between characters • modify message XY position • time marking in multiple formats • clock adjustment • laser system control parameters • sequential numbers • password protection system • for both static and dynamic applications.

TOUCH SCREEN

Connection via RS-232 with ScanLINUX software included on marking laser system • Handheld Terminal emulator • allows control of the laser marking system from a remote touch screen • easy integration • easy and safe operator access for changing messages and parameters on line • for both static and dynamic applications.

PERSONAL COMPUTER

Connection via TCP/IP (Marca Lite™) or Ethernet TCP/IP (Marca™) with ScanLINUX software included on marking laser system • compatible with all kinds of operating systems Windows NT/Me/2000/XP • able to control the laser marking system from a remote PC • quickly transfer of messages from PC to ScanLINUX • confers powerful graphics capabilities • quick and easy access to the editing and graphics capabilities • able to create messages in all of the marking area • for both static and dynamic applications.



SOFTWARE FOR LASER SYSTEMS

SCANLINUX™ V 3.3 INTERNAL SOFTWARE CONTROLLING THE LASER MARKING SYSTEM

ScanLINUX is the internal software running on Linux managing the laser marking system • controlling laser beam position • calculating printer laser position • controlling angular position of scanner mirrors • calculating corrections for marking on the fly • controlling electronic scanning board input/outputs • ScanLINUX allows the operation of the Handheld, Touchscreen, Marca Lite™ and Marca™ software • ScanLINUX includes Crystal Font™ dot matrix fonts • ScanLINUX software provides the option of changing the menu language of the Handheld terminal and Touch Screen. It also allows the user to see the number of marks made during a printing session without going out of the printing menu. Allows SHS.

MARCA LITE™ V 5.3 SOFTWARE FOR NETWORKING, STATIC AND DYNAMIC APPLICATIONS VIA TCP/IP

Easily installed • Software compatible with Windows NT/2000/ XP for networking, static and dynamic supplied with protection key • networking capabilities of several laser dynamic application systems via TCP/IP • basic graphic interface able to built in text and graphic in all the marking area • create simple logos • capable of downloading MFF fonts and DXF vector files • selection of the user message via RS-232 • alarm control • messages activated by hourly, daily or monthly changes. Allows SHS.

MARCA™ V 5.3 SOFTWARE FOR HIGH RESOLUTION & STATIC/DYNAMIC APPLICATIONS VIA ETHERNET TCP/IP

Easily installed • Software compatible with Windows NT/2000/XP for high resolution & Marca™ software supplied with protection key • controls laser systems via Ethernet static/dynamic applications TCP/IP • powerful WYSWYG design editor in all the marking area • zoom • unlimited layering • bar codes • 2D barcodes • MFF font editor • character filling features • capable of downloading BMP, JPG, GIF, TIF, PCX and other graphic files • capable of downloading DXF vector files with multiple import options • objects and characters morphing • ODBC (database) features • fill object features • true type text fonts • messages activated by hourly, daily or monthly changes • networking capabilities of several systems via Ethernet TCP/IP • access registration for all the users • creation of reports of the registered marking in the CPU laser memory • synchronization of PC and laser clocks • "auto text" external messages • aligns the selected objects • power, frequency, resolution and speed adjustments by software • allows to configure function keys • Unicode Enable. Allows SHS.

